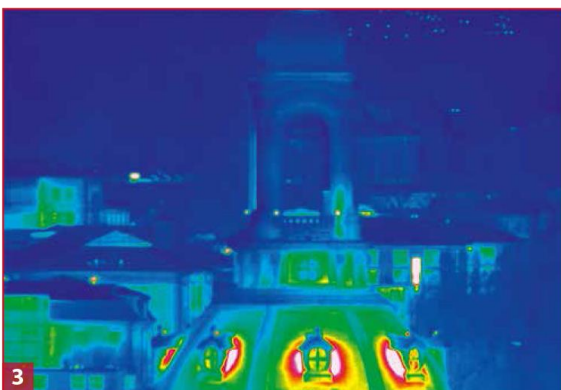
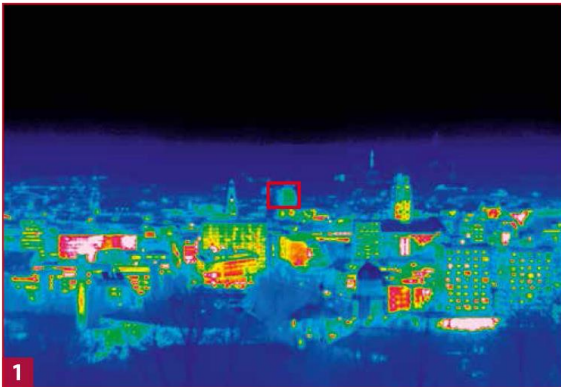


THERMAL CAMERA

MODEL NICCZZ

The combination of this thermal imaging system with the premium 30x zoom lens facilitates complex and reliable surveillance. The detection range is outstanding: vehicles can be detected up to 18 km and persons up to 15 km. The rugged and exact power zoom together with the high-performance 30x zoom lens achieves a continuously adjustable field of view from $(39.8 \times 32.3)^\circ$ down to $(1.3 \times 1.0)^\circ$ with a detector format of $(1,280 \times 1,024)$ IR pixels. Therefore, also objects being far away can be displayed with a high-resolution infrared image. The customizable software interface offers time coded real-time playback.



DRESDEN CHURCH, LENS FOCAL LENGTH (28 ... 850) MM



FEATURES

- ✓ Cooled detectors with up to $(1,280 \times 1,024)$ IR pixels
- ✓ Spectral range $(3.6 \dots 4.9) \mu\text{m}$
- ✓ 30x infrared zoom lens
- ✓ Detection range of 15 km for persons
- ✓ Detection range of 18 km for vehicles

SPECIFICATIONS

THERMAL CAMERA NICCZZ

THERMAL CAMERA MODEL NICCZZ	
Spectral range	(3.6 ... 4.9) μm
Pitch	15 μm
Detector	InSb
Detector format (IR pixels)	ImageIR® 8300 Z: (640 × 512) ImageIR® 9300 Z: (1,280 × 1,024)
Image Acquisition	Snapshot
Readout Mode	ITR / IWR
Aperture Ratio	f/5.5
Detector Cooling	Stirling Cooler
Temperature Measuring Range	(-10 ... 200) °C, up to 500 °C
Temperature resolution @ 30 °C	0.02 K
Frame rate (full / half / quarter / sub frame)	ImageIR® 8300 Z: 200 / 570 / 1,000 / 4,700 Hz (14 bit), 200 / 670 / 1,200 / 5,000 Hz (13 bit) ImageIR® 9300 Z: 50 / 200 / 390 / 3,400 Hz
Window mode	Yes
Focus	Motor focus with absolut focussing
Focusing time	300 m up to ∞ : ≤ 0.5 s
Lens Focal Length	(28 ... 850) mm (30× optical zoom)
Zoom Setting Time	100 ... 850) mm: ≤ 2 s
Field of View	ImageIR® 8300 Z: (19.8 × 15.9)° ... (0.6 × 0.5)° ImageIR® 9300 Z: (39.8 × 32.3)° ... (1.3 × 1.0)°
Minimum Object Distance	(3 ... 50) m
Max. Detection Range (Vehicle/ Person)	18 / 15 km
Max. Identification Range (Vehicle/ Person)	12 / 9.5 km
Dynamic Range	ImageIR® 8300 Z: 13 / 14 Bit ImageIR® 9300 Z: 14 Bit
Integration Time	ImageIR® 8300 Z: (0.6 ... 20,000) μs ImageIR® 9300 Z: (0.5 ... 18,000) μs
Multi Integration Time	Yes
Image Synchronisation	Internal, IRIG-B, external
Interfaces	GigE-Vision compatible, RS232, USB 2.0
Trigger	SyncIN, 2 IN / 2 OUT, IRIG
Tripod Adapter	8 × M6
Power Supply	24 V DC, wide-range power supply
Storage & Operation Temp.	(-40 ... 70) °C, (-20 ... 50) °C
Protection Degree	IP54, IP65
Dimensions, Weight	(360 × 240 × 270) mm, 17.5 kg