



Hemsbach | Germany  
 Installation: 350 kW | D-Dome System



Hemsbach | Germany  
 Installation: 350 kW | D-Dome System

Mounting systems for solar technology



SERVICE-HOTLINE  
**+49 (0)7159 42059-0**  
[www.k2-systems.com](http://www.k2-systems.com)

Produktblatt D-Dome System | GB5 | 1014 | Subject to change  
 Product illustrations are exemplary illustrations and may differ from the original.



K2 SYSTEMS  
**FLAT ROOF SYSTEMS**  
**D-DOME SYSTEM**

## D-DOME SYSTEM

- Innovative 10° flat roof system with double-sided configuration suitable for all orientations
- Ideal for roofs with low ballast potential and with or without a parapet
- No shading issues therefore optimal roof coverage possible
- Quick mounting due to reduced number of components and assembly only from above
- Very low dead weight
- Tested in the wind tunnel
- K2 SpeedRail as a base rail
- Static proven solution using the K2 Base Planning Software
- In addition system available: K2 building protectionmat, K2 Scale /Scale XL or K2 Porter for simple and quick installation of ballast
- Extended range of applications also on profiled sheet metal roofs
- Optionally with equipotential bonding / lightning protection

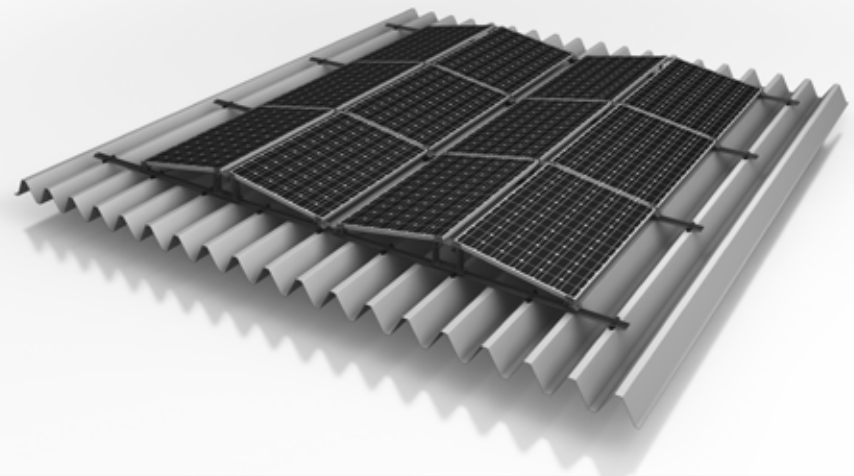
### Technical data



Field of application	Flat roof to 5°
Roofing	Membranes-, Trapezoidal- und Bitumensheets, Gravel and Green Roofs
PV modules	Module fastening with corner clamping or alternatively mid clamping observing module manufacturer recommendations
Module orientation	Horizontal
System orientation	Flexible double-sided with any orientation possible
Material	Aluminium (EN AW-6063 T66)
Connecting elements	Stainless steel A2-70
Weight/m <sup>2</sup> module surface	Without module, without ballast approx. 2.5 kg
Roof connection	Overlay with potential ballast; no roof penetration
Static principles	Calculation principles in accordance with Eurocode 9 - dimensioning and construction of aluminium structures using wind tunnel tests
Load assumption in accordance with	Eurocode 1 / DIN EN 1991
System components	K2 Dome D1000, K2 Dome SD, K2 SpeedRail, middle and end clamps set, M K2, K2 Scale/Scale XL, K2 Porter, building protection mat, Allen bolt, lock washer



Detail illustration - D-Dome System



K2 D-Dome System on Trapezoidal sheet